



CREATIVE OUTLET ASTE 2024

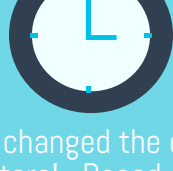


EXHIBIT HALL HOURS!

ASTE has changed the exclusive exhibitor hours to meet the needs of our members and YOU, our exhibitors! Based on survey data, ASTE will host Exhibit Hall Hours starting on Saturday Late Morning- Monday Afternoon.

EXHIBIT HALL LOAD-IN (Friday afternoon):

- Friday, 2/16 from 2:00 PM - 6:00 PM
- *Note: If you are unable to check-in and set up your booth Friday afternoon, please contact director@aste.org for Saturday AM set up.

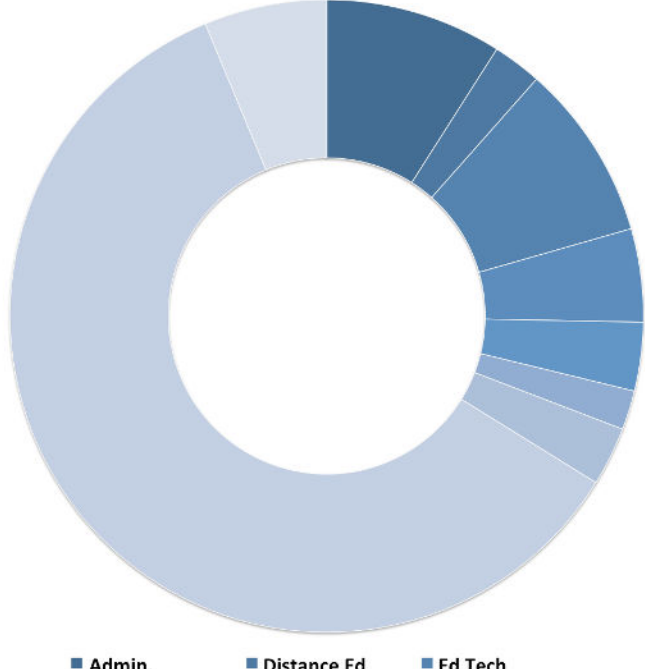
EXHIBIT HALL OPEN SATURDAY at Lunch through Monday's lunchtime

EXCLUSIVE EXHIBIT HALL TIME (sessions are not occurring during these times):

- Saturday 2/17: Starting at 11:30 and 4:00 PM - 4:30 PM
- Sunday 2/18: 8:00 AM - 8:45 AM and 2:45 PM - 3:15 PM + lunchtime
- Monday 2/19: 10:00 AM - 10:30 AM + lunchtime
- *Note: The ASTE Annual Giveaway Event is Monday, 2/19 from 4:30PM-5:30PM. You are invited to bring a giveaway and participate! You can present your gift or have an ASTE board member present it on your behalf.

EXHIBIT HALL CLOSING AND LOAD OUT (Monday after lunch)

- Monday, 2/19 at 12:30 PM, Exhibit Hall closes. Ballroom will be available for table talk discussions.

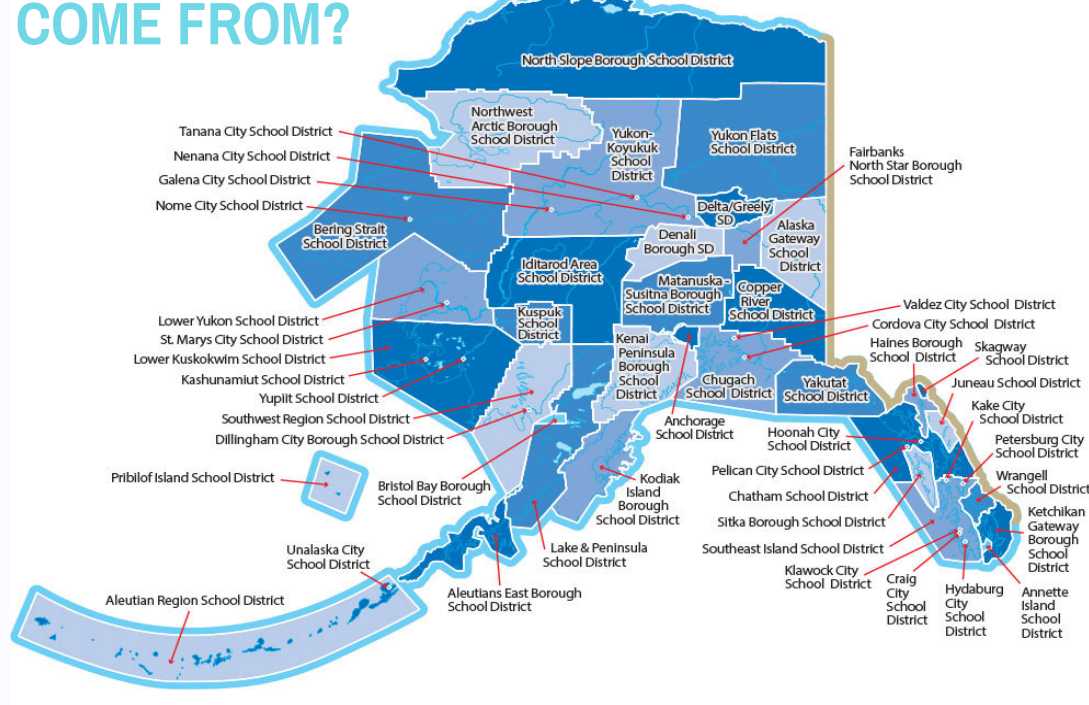


1 WHO COMES TO ASTE?

Educational professionals across Alaska looking for solutions for their classrooms using technology.

Welcome to the 2024 ASTE Conference where we celebrate our theme, "Creative Outlet." This is where technology in the classroom, creativity, and curiosity come together. Like a lightbulb that shines brightly with new ideas, educational technology can light up our students' minds, spark their creativity, and awaken their curiosity. In this conference, we will explore how technology can turn classrooms into creative workshops, encouraging students to ask questions, seek answers, and illuminate their path to learning. So, let's switch on our imaginations and brighten the future of education together.

2 WHERE DO THEY COME FROM?

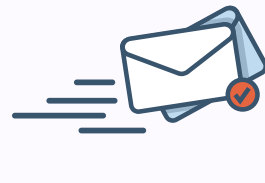


Over the last several years, we are proud to see 96% of school districts represented. Our membership is active throughout the state. ASTE is an opportunity to connect with schools districts in every part of the vast State of Alaska.

*Chart from Alaska Superintendents Association <http://www.alaskaacs.org/asa/information/alaska-school-districts/>

3 HOW WILL MY COMPANY PARTICIPATE?

ASTE Exhibit	VS	ASTE Sponsor
<p>20 X 24</p> <p>Exhibit at ASTE 2024 in our Exhibit Hall or in our main conference hallway.</p> <p>Hours in our Exhibit Hall are aimed at improving your booth experience.</p> <p>Table Spaces @ \$900</p> <p>Booth Spaces @ \$1000</p>		<p>20 X 24</p> <p>Sponsorship adds value to your visit. With Sponsorship you can:</p> <ul style="list-style-type: none"> -Add your logo to a premium conference item -Add a media item to our gift bag -Present to our members -Exhibit in a double booth



Questions so far? You may email Director@aste.org.

4 WHAT DOES ASTE PROVIDE FOR EXHIBITORS?



Booths approximately 8 X 10 Pipe and Drape, 500 watt Electrical Outlet, 6 ft Table with 2 chairs, 7x44 Booth ID sign



High Speed Dependable WIFI, Security Guard Service, Complimentary meals



Shipping, storage, special lighting or booth furnishings available through Alaska Event Services @ info@alaskaeventservices.com

ASTE Sponsorship Levels

- Diamond Level - \$26,250 - Top Tier (cash + in-kind)** 1. Logo-Link on top level of our website and promotional materials. 2. Priority selection of up to two Exhibitor Booths at prime locations. 3. Brand tied to a premium conference service or event. 4. Breakout Sessions up to a total of 4 hours. 5. Access to membership directory. 6. Printed or media item distributed in our members gift bags.
- Platinum - \$12,600 -Top Tier (cash + in-kind)** 1. Logo-Link on top level of our website and promotional materials. 2. Priority selection of up to two exhibitor booths at prime locations. 3. Brand tied to a premium conference giveaway, product, event, or keynote. 4. Breakout Sessions up to a total of 3 hours. 5. Access to membership directory. 6. Printed or media item distributed in our members gift bags.
- Gold - \$8,400 - Mid Tier (cash + in-kind)** 1. Logo-Link on our website. 2. Priority selection of up to two exhibitor booths at prime locations. 3. Brand tied to a premium conference giveaway, product, event, or keynote. 4. Breakout Sessions up to a total of 2 hours. 5. Access to membership directory. 6. Printed or media item distributed in our members gift bags.
- Silver- \$5,250 - Mid Tier (cash +in-kind)** 1. Logo-Link on the front page of our website. 2. Priority selection of up to two exhibitor booths at prime locations. 3. Brand tied to a premium conference giveaway, product, event. 4. Breakout Sessions up to a total of 1 hour. 5. Access to membership directory. 6. Printed or media item distributed in our members gift bags.
- Bronze - \$1,575 - Base Tier (cash)** 1. Logo-Link on the front page of our website. 2. Priority selection of exhibitor booths. 3. Printed or media item distributed in our members gift bags. 4. Breakout Sessions up to a total of 1/2 hour.
- Associate - \$525 - Base Tier (cash)** 1. Logo-Link on the front page of our website. 2. Priority selection of corner/double exhibitor booths or other locations. 3. Printed or media item distributed in our members gift bags.

05 WHY DOES ASTE WANT MY COMPANY TO EXHIBIT?

CREATIVE OUTLET ASTE 2024: The ASTE Board for 2023-2024, under the direction of the President, Nikki Stevin, has selected Creative Outlet as our theme. This is where technology in the classroom, creativity, and curiosity come together. Like a lightbulb that shines brightly with new ideas, educational technology can light up our students' minds, spark their creativity, and awaken their curiosity. In this conference, we will explore how technology can turn classrooms into creative workshops, encouraging students to ask questions, seek answers, and illuminate their path to learning. So, let's switch on our imaginations and brighten the future of education together.



REGISTER for ASTE
Click [here](#) to register for your booth and sponsorship.



For more information contact
Tammy Halfacre, Executive Director:
Email: Director@aste.org
Phone: 907-957-2783
Website: aste.org